

RealCast Superior WiFi Display Dongle For AirPlay, Miracast, and DLNA Instruction Manual

Ver. 1.1

Thanks for using RealCast Superior WiFi display dongle, which supports AirPlay, Miracast and DLNA for both local and online content mirroring and pushing perfectly by simple steps.

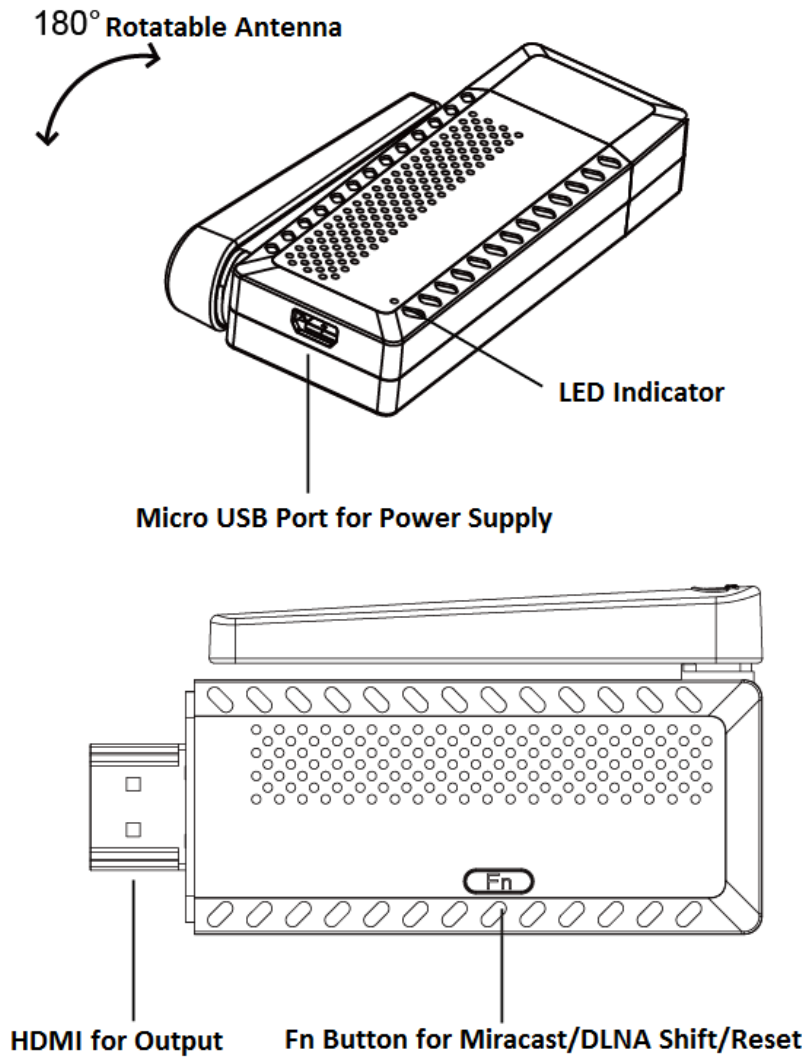
This is the universal instruction manual for Visonicom RealCast WiFi display dongles, which is to show the basic operations of RealCast dongle for Android and iOS users. Though actual operations for each user may differ for the pictures, illustrations and descriptions as shown in this manual due to different Android/iOS devices and versions Android and iOS, we hope this manual can help you to enjoy your amazing RealCast AirPlay Miracast DLNA dongle.

For larger font of this quick installation guide, please read online version:
<http://miracastdongle.com/manual/realcast-airplay-miracast-dlna-dongle-manual.pdf>

Always visit our portfolio site <http://www.airplay-receiver.com> for more product info, demo, upgrading.

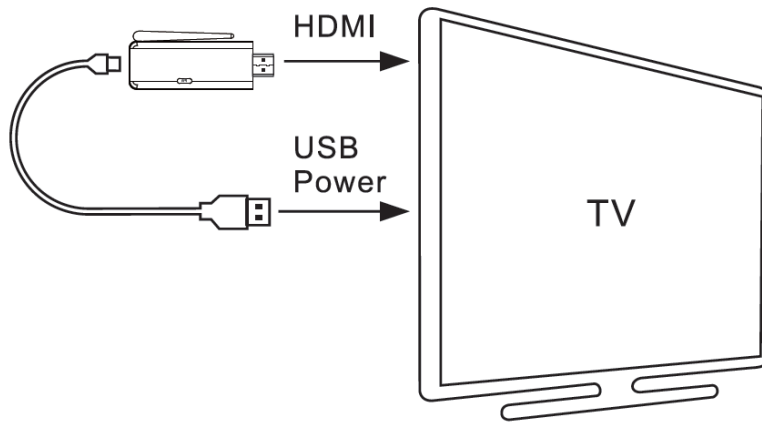
Index:

1. Product I/O Interface.....	4
2. Physical Connection.....	5
3. Mirroring/Pushing Local Content.....	5
3.1 AirPlay Mirroring.....	5
3.2 Miracast Mirroring.....	9
3.3 DLNA Pushing.....	11
3.3.1 Get ready for DLNA.....	11
3.3.2 Pushing Local Content.....	13
4. Mirroring/Pushing Online Content.....	14
4.1 Miracast.....	14
4.2 AirPlay and DLNA.....	14

1. Product I/O Interface ([Back to Index](#))

This is the typical interface/mechanics of our RealCast Superior WiFi Display Dongles, though some of our dongles come with built-in WiFi antenna, and some with external WiFi module bundling with the USB cable.

2. Physical Connection [\(Back to Index\)](#)



1. Turn on the TV and make sure the input is HDMI or proper HDMI port, in case there are multiple HDMI ports.
2. Plug the RealCast Superior WiFi Display Dongle into the HDMI port of the TV. A male-female HDMI extension cable/adaptor can be applied when necessary.
3. Connect Micro-USB end of USB cable to the Dongle for power supply, and the other end (Type A) to the USB port of TV, or to a USB charger.
4. Then the RealCast dongle boots up with the LED indicator on.

3. Mirroring and Pushing Local Content [\(Back to Index\)](#)

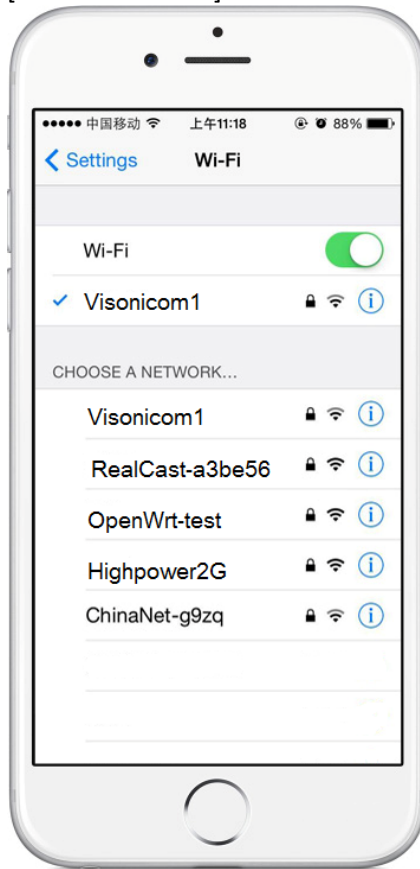
3.1 AirPlay Mirroring

The default operation mode of the RealCast dongle is DLNA (for DLNA, also for AirPlay mirroring, and DLNA pushing). On the TV screen or projector screen, the DLNA mode is highlighted. If not, please press the [Fn] button of the RealCast dongle to switch to DLNA Mode



Enable WiFi on iPhone(or iPad), in the AP list we can see the SSID of the RealCast dongle

as RealCast-xxxxxx, here it is [RealCast-a3be56].



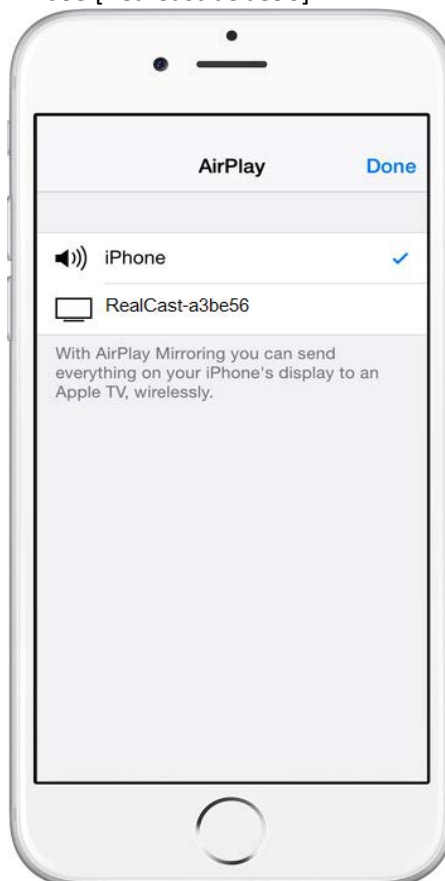
Tap [RealCast-a3be56], and input password [12345678], then click [Join].



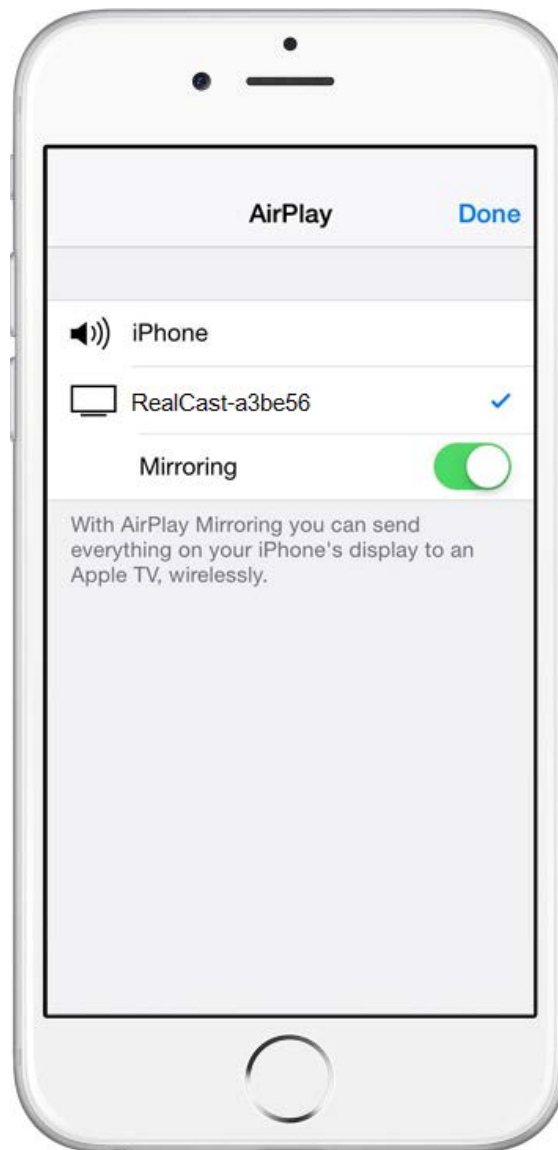
Now the iPhone is connected to the RealCast AirPlay Miracast DLNA Dongle. Swipe out the menu from the bottom of the iPhone screen, we can see the Airplay icon.



Tap the Airplay icon, we will see [RealCast-a3be56].



Tap [RealCast-a3be56], we can see the Mirroring function, enable it, then the iPhone screen is mirroring to the TV screen.

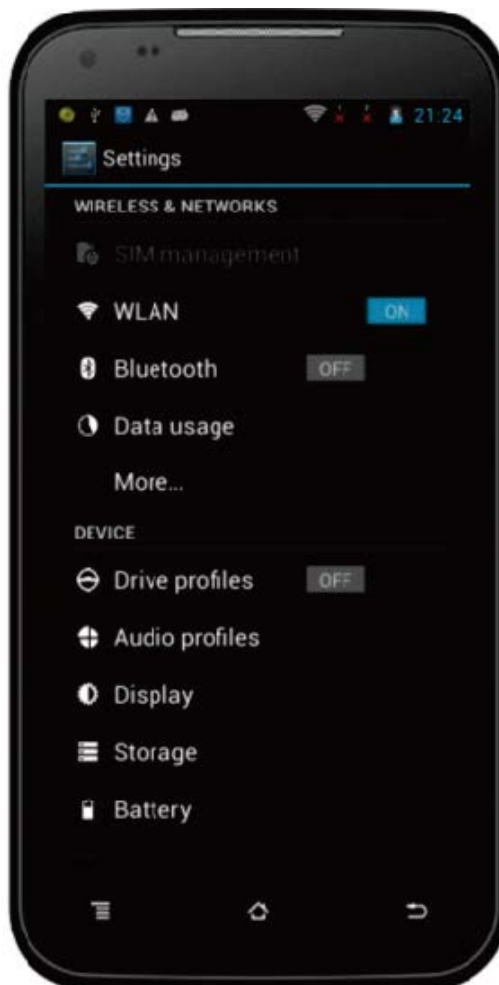


3.2 Miracast Mirroring [\(Back to Index\)](#)

Press the [Fn] button of the RealCast Dongle to shift from DLNA mode to Miracast Mode. The Miracast Mode will be highlighted on your TV screen.



Enable WiFi on your Android smart phone(or tablet PC), go to [Settings], then go to [Display]



Then go to [Wireless display](some Android phones may shown as WiFi Display, Miracast, Screen sharing, Screen Mirroring, etc).



Then we can see the RealCast dongle's SSID(here it is RealCast-a3be56) in the Wireless Display device list.



Tap [RealCast-a3be56], then it starts to build WiFi direct connection between smart phone

and the RealCast dongle. Then the smart phone screen is mirroring to the TV screen.

Remark: the Operation System of the Android smart phone or tablet PC must be 4.2 or greater.

3.3 DLNA Pushing ([Back to Index](#))

3.3.1 Get ready for DLNA

Have the dongle to work in DLNA mode. In case it is in Miracast mode, press the Fn button to shift from Miracast to DLNA.

Enable WiFi on the smart phone, we can see the name of the RealCast dongle in AP list (here it is RealCast-a3be56).



Tap it (RealCast-a3be56), input password [12345678] to build WiFi connection between smart phone and the Dongle. Run a web browser of smart phone and visit <http://192.168.49.1>



Tap the WiFi signal icon
list



and tap [Scan] from the next screen to get the existing AP



Tap the proper one of the APs. Here it is [Visonicom1]



Input password of the AP [Visonicom1]

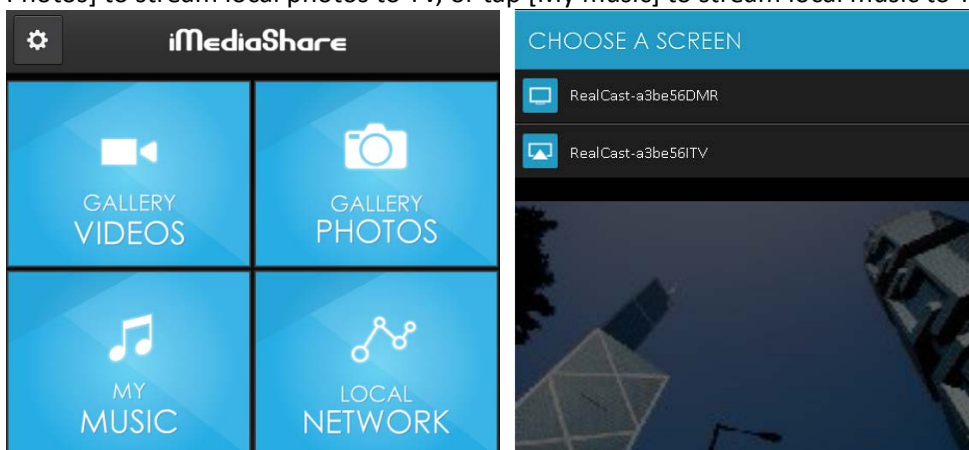
Now, the RealCast dongle is able to access Internet through the AP. And its IP address assigned by the AP will be shown on the TV screen. Then DLNA is ready.

Similar operation on Apple iPhone/iPad for the DLNA function.

3.3.2 Pushing Local Content [\(Back to Index\)](#)

Run one of the DLNA-enabled applications, such as [iMediaShare] installed on smart phone or tablet PC.

Open this application, tap [Gallery Videos] to stream local videos to TV, tap [Gallery Photos] to stream local photos to TV, or tap [My music] to stream local music to TV.



4. Mirroring/Pushing Online Content ([Back to Index](#))

4.1 Miracast ([Back to Index](#))

- a. Connect your Android phone/tablet PC with your current AP/wireless router for internet access.
- b. Follow Chapter 3.2 above for Miracast
- c. Done

4.2 AirPlay and DLNA ([Back to Index](#))

- a. Follow Chapter 3.1 and/or 3.3.1 to have the RealCast dongle get connect with your current AP/wireless router.
- b. Disconnect the WiFi connection between your Android phone/tablet PC/iPhone/iPad, and connect your phone/tablet PC/pad with the same AP/wireless router for internet access.
- c. Follow Chapter 3.1 and/or 3.3.2 for mirroring/pushing online content with AirPlay or DLNA respectively.
- c. Done